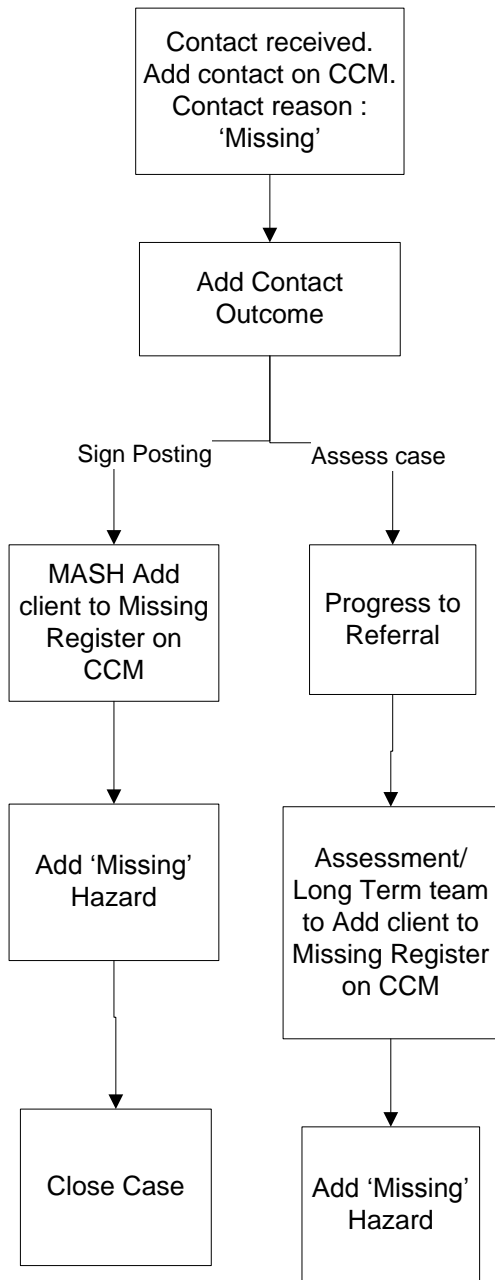
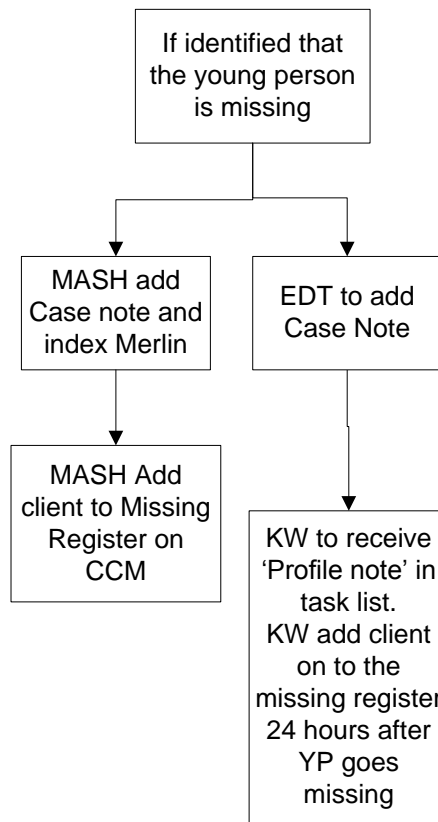


# Missing Person – October 2015

## New contacts



## Open Cases



## Out of Borough

Informed by other authority via a inbox. To be reviewed periodically but NOT put on CCM

**Monthly Police list sent prior to Missing Panel. Missing Admin to check the list of cases on CCM. Run report from CCM and review at Missing Panel.**

**Start date on the register is the data child went missing and NOT the date the Merlin was received.**

**When the child returns home, an end date must be added to the Missing Register.**

**If a child or young person goes missing multiple times in one day, then the Missing Register episode should be open and closed on the same date an exact number of times.**